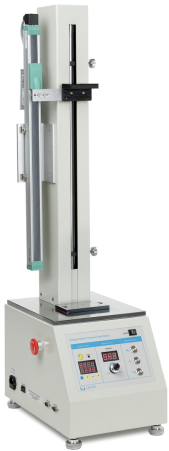


KERN TVO 1000N500S-LD

KERN

Practical set for force-displacement-measurements in laboratory and industry



Category

| | |
|------------------|----------------|
| Brand | Sauter |
| Product category | Test bench |
| Product group | Test stand set |
| Product family | TVO-LD |

Measuring System

| | |
|-------------------------|---|
| Length measuring device | Length measuring device with data interface |
| Measurable length [Max] | 52 cm |

Approval

| | |
|---------|---|
| CE mark | ✓ |
|---------|---|

Display

| | |
|---------------------------------------|---------------|
| Display type | LED segments |
| Display type | 7 segment LED |
| Display digit height - smallest digit | 9 mm |

Construction

| | |
|---------------------------------------|----------------------|
| Dimension (W×D×H) | 980×405×265 mm |
| Dimension housing (W×D×H) | 980×405×265 mm |
| Dimensions completely mounted (W×D×H) | 980×405×265 mm |
| Material display housing | Metal |
| Generated force [Max] | 1 kN |
| Mounting - force application | 5 × threaded hole M6 |
| Mounting - force dissipation | 5 × threaded hole M6 |
| Measurement alignment | vertical |
| Type of drive | Stepper motor |
| Traverse distance [Max] | 500 mm |
| Transversal movement speed [Min] | 1 mm/min |

| | |
|----------------------------------|------------|
| Transversal movement speed [Max] | 500 mm/min |
|----------------------------------|------------|

| | |
|--------------------------------------|------|
| Transversal movement speed variation | 0,5% |
|--------------------------------------|------|

Functions

| | |
|---------------------------------|---|
| Speed display | ✓ |
| Repeat function | ✓ |
| Length measuring - zero setting | ✓ |
| Limit switch | ✓ |

Power Supply

| | |
|---|-----------------------|
| Input voltage power supply / power [Max] | 230 V AC, 50 Hz |
| Input voltage device / power [Max] | 230 V AC, 50 Hz |
| Plug-in power supply type | Built-in power supply |
| Supplied power supply | Power supply unit |
| Plug-in power supply / adapter for countries - optional | EURO UK CH |

Environmental conditions

| | |
|---------------------------|--------|
| Ambient temperature [Min] | 10 °C |
| Ambient temperature [Max] | 40 °C |
| Storage temperature [Min] | -10 °C |
| Storage temperature [Max] | 40 °C |

Packing & Shipping

| | |
|------------------------------|-----------------|
| Readability force [d] (N) | 2 d |
| Dimensions packaging (W×D×H) | 470×370×1150 mm |
| Net weight | 35 kg |
| Shipping method | Freight |
| Net weight approx. | 36 kg |
| Gross weight approx. | 50 kg |
| Shipping weight | 49 kg |

Pictograms

STANDARD

