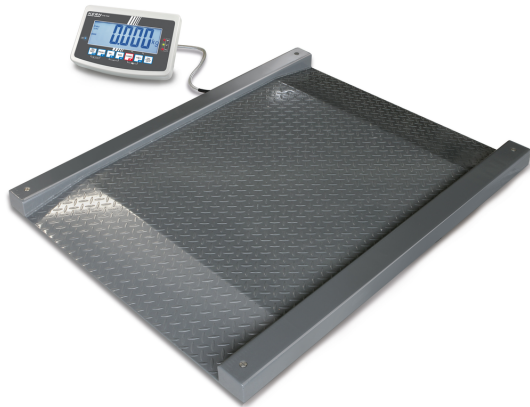


KERN NFB 1.5T0.5LM

KERN

Drive-through scale (IP67) with XXL display device, verification optional



Accuracy classe	III
Verification scale interval [e]	0,5 kg
Conformity assessment possible ex works	✓

Display	
Display type	LCD
Display screen size	165×64 mm
Display backlight	✓
Display digit height	52 mm
Languages of the user interface	Symbol language

Construction	
Dimension display device (W×D×H)	250×160×58 mm
Dimensions weighing platform (W×D×H)	1800×1400×80 mm
Material display housing	Plastics
Material weighing plate	steel, lacquered
Material platform	steel, varnished
Dimensions weighing surface (W×D)	1200×1200 mm
Cable length	5 m
Display device cable length	5 m
Allowed cable length display device [Max]	30 m
Material load cell(s)	alloyed steel
Load cells - number	4
Levelling feet adjustable	✓
Wall mount	✓
Stand inclinable	✓

Functions	
Number of keys for operation	7
Auto-off interval(s) in mains power mode	selectable
Auto-off interval(s) in battery mode/rechargeable battery mode	selectable
Tare function	manual (single & multi)
Counting function	✓
Tolerance weighing	✓
Tolerance weighing - type of signal	acoustically visual
Function for averaging under unstable weighing conditions	✓
Recipe/summing level	Sum A
Sum memory function	✓
Underfloor weighing	None

Category	
Brand	KERN
Product category	Industrial scale
Product group	Drive-through scale
Product family	NFB

Measuring System	
Construction type of the scale	Single-range balance
Number of weighing ranges	1
Weighing system	Strain gauge
Weighing capacity [Max]	1500 kg
Readability [d]	0,5 kg
Resolution	3.000
Linearity	± 1,5 kg
Reproducibility	0,5 kg
Tare range	-1500 kg
Default unit	kg
Units	kg
Units (if device is conformity assessed)	kg
Minimum weight [Min]	10 kg
Adjustment options	Adjusting with external weight
Recommended adjusting weight	1500 kg (M2)
Stabilization time	2 s
Warm-up time	10 min
Eccentric loading at 1/3 [Max]	2,5 kg
Loadcell type	ZEMIC H8C 1 ton
Load cell connection	4-wire

Approval	
CE mark	✓
Pattern approval for conformity assessment	✓

KERN NFB 1.5T0.5LM



Drive-through scale (IP67) with XXL display device, verification optional

Interfaces	RS-232 standard
	Bluetooth BTC (v2.0) (optional, factory)
	analogue (0 - 10 V) (optional, factory)
	analogue (4 - 20 mA) (optional, factory)
IP protection - display	no IP protection
IP protection - load cell	IP67

Counting

Reference quantity	10, 20, 50, 100, 200
--------------------	----------------------

Power Supply

Input voltage power supply / power [Max]	100 V - 240 V, 50 / 60 Hz
Input voltage device / power [Max]	12 V, 500 mA
Plug-in power supply type	Power adapter
Supplied power supply	Power supply unit
Plug-in power supply / adapter for countries - included with the delivery	EURO UK US CH

Plug-in power supply / adapter for countries - optional	EURO AUS UK US CH
---	-------------------------------

Rechargeable battery optional	Rchrg. battery optional (factory)
Rechargeable battery charging time	10 h
Rechargeable battery operating time - backlight on	8 h
Rechargeable battery operating time - backlight off	35 h
Battery	no battery
Battery / accumulator type	Pb

Environmental conditions

Humidity of environment [Min]	0 %
Humidity of environment [Max]	80 %
Ambient temperature [Min]	-10 °C
Ambient temperature [Max]	40 °C

Packing & Shipping

Readability force [d] (N)	2 d
Dimensions packaging (W×D×H)	1850×1510×350 mm
Net weight	153 kg
Shipping method	Freight

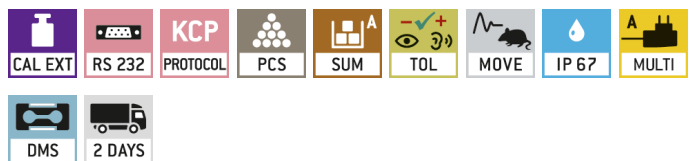
Net weight approx.	155 kg
Gross weight approx.	235 kg
Shipping weight	232 kg

Services (optional)

Article number for adjustment at the location of installation	961-250
Article number for conformity assessment	965-230
Article number for DAkkS calibration	963-130
Article number for certificate of conformity (verification)	969-517

Pictograms

STANDARD



OPTION



FACTORY

