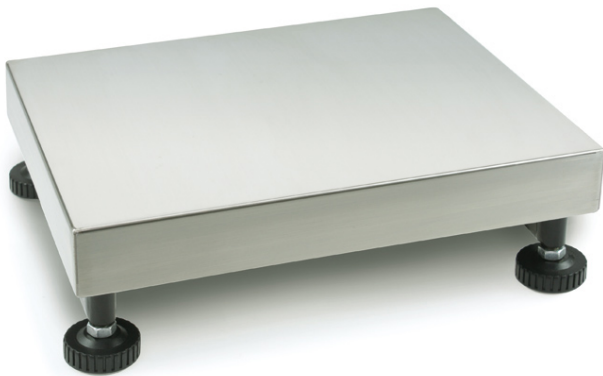


# KERN KFP 150V20M



Platform: weighing plate of stainless steel, painted steel base, silicone-coated aluminium load cell with protection against dust and water splashes IP65



## Category

Brand	KERN
Product category	Component
Product group	Platform

## Measuring System

Weighing capacity [Max]	60 kg; 150 kg
Readability [d]	5 g
Minimum weight [Min]	400 g; 1 kg
Loadcell type	aluminium IP65 silicone-coated
Load cell connection	6-wire

## Approval

Verification scale interval [e]	20 g; 50 g
Conformity assessment possible ex works	✓

## Construction

Dimensions weighing platform (W×D×H)	500×400×124 mm
Material weighing plate	stainless steel
Material platform	steel, varnished
Dimensions weighing surface (W×D)	500×400 mm
Cable length	2,5 m
Allowed cable length display device [Max]	3 m
Material load cell(s)	aluminium
Load cells - number	1
Levelling feet adjustable	✓

## Functions

IP protection - load cell	IP65
---------------------------	------

## Packing & Shipping

Readability force [d] (N)	1 d
Dimensions packaging (W×D×H)	555×930×220 mm
Net weight	9,8 kg
Shipping method	Parcel service
Net weight approx.	10 kg
Gross weight approx.	17 kg
Shipping weight	22,7 kg

## Services (optional)

Article number for conformity assessment	965-229
Article number for DAkkS calibration	963-129

## Pictograms

### STANDARD



### FACTORY

