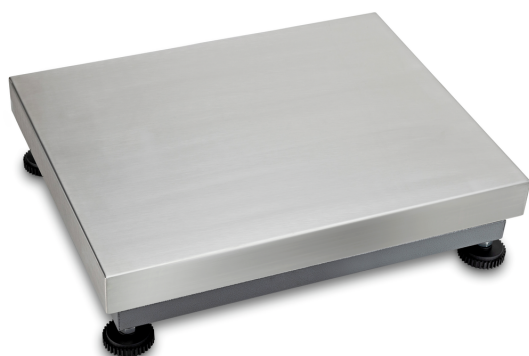


# KERN KBP 600V20M



Platform: weighing plate of stainless steel, painted steel base, silicone-coated aluminium load cell with protection against dust and water splashes IP65



## Functions

IP protection - load cell	IP65
---------------------------	------

## Environmental conditions

Ambient temperature [Min]	-10 °C
Ambient temperature [Max]	40 °C

## Packing & Shipping

Readability force [d] (N)	2 d
Dimensions packaging (W×D×H)	1180×670×220 mm
Net weight	41,8 kg
Shipping method	Freight
Net weight approx.	42 kg
Gross weight approx.	55 kg
Shipping weight	55 kg

## Services (optional)

Article number for conformity assessment	965-230
Article number for DAkkS calibration	963-130

## Pictograms

### STANDARD



### FACTORY



## Category

Brand	KERN
Product category	Component
Product group	Platform

## Measuring System

Weighing capacity [Max]	300 kg; 600 kg
Readability [d]	20 g
Minimum weight [Min]	2 kg; 4 kg
Loadcell type	aluminium IP65 silicone-coated
Load cell connection	6-wire
Load cell - Resolution (verifiable)	2 × 3000 e

## Approval

Verification scale interval [e]	100 g; 200 g
Conformity assessment possible ex works	✓

## Construction

Dimensions weighing platform (W×D×H)	800×600×200 mm
Material weighing plate	stainless steel
Material platform	steel, varnished
Dimensions weighing surface (W×D)	800×600 mm
Cable length	2,5 m
Allowed cable length display device [Max]	20 m
Material load cell(s)	aluminium
Load cells - number	1
Levelling feet adjustable	✓