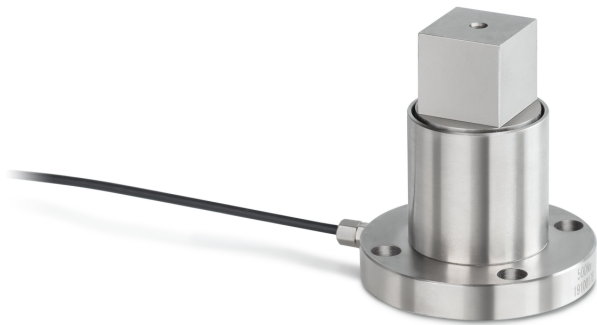


KERN DC 10-Y1

Static torque sensor made from alloy steel



Mounting - force dissipation 4 × through hole Ø 6,5 mm

Environmental conditions

Use temperature [Min] -20 °C
Use temperature [Max] 65 °C

Packing & Shipping

Readability force [d] (N) 1 d
Dimensions packaging (W×D×H) 120×90×85 mm
Net weight 0,38 kg
Shipping method Parcel service
Net weight approx. 0,40 kg
Gross weight approx. 0,45 kg
Shipping weight 0,421 kg

Pictograms

STANDARD



Category

Brand Sauter
Product category Measuring cell
Product group Torque sensor
Product family DC Y1

Measuring System

Load cell connection 4-wire
Load cell - characteristic value - nominal 1,2 mV/V
Load cell - characteristic value - variance 0,2 mV/V
Load cell - Combined error 0,5%
Measuring applications static torque
Load cell - Input resistance - nominal 380 Ω
Load cell - Output resistance - nominal 350 Ω
Load cell - Isolation resistance - [Min] 5000 MΩ
Load cell - Recommended excitation voltage [Min] 9 V
Load cell - Recommended excitation voltage [Max] 12 V
Load cell - Input resistance - variance 10 Ω
Load cell - Output resistance - variance 3 Ω
Measuring range torque [Max] 10 Nm

Approval

CE mark ✓

Construction

Material steel
Cable length 2 m
Mounting - force application 12,5 mm outer square