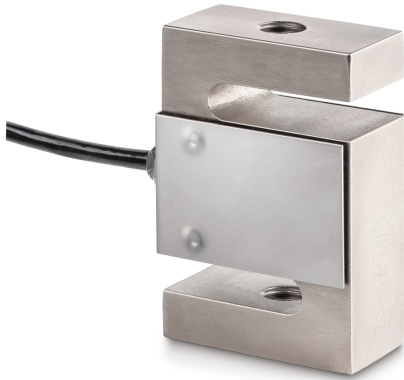


KERN CS 5000-3P1

KERN

4-wire "S" measuring cell made of nickel-plated steel for force and mass measurement



Construction

Design	"S" shaped cell
Dimension (W×D×H)	76,2×101,6×27,2 mm
Material	steel, nickel-plated
Cable length	6 m
Mounting - force application	Threaded hole M20 × 1,5
Mounting - force dissipation	Threaded hole M20 × 1,5

Functions

IP protection - complete device	IP67
---------------------------------	------

Environmental conditions

Use temperature [Min]	-10 °C
Use temperature [Max]	40 °C
Ambient temperature [Min]	-35 °C
Ambient temperature [Max]	65 °C
Storage temperature [Min]	-40 °C
Storage temperature [Max]	70 °C

Packing & Shipping

Readability force [d] (N)	1 d
Dimensions packaging (W×D×H)	205×170×60 mm
Net weight	1,36 kg
Shipping method	Parcel service
Net weight approx.	1,4 kg
Gross weight approx.	1,6 kg
Shipping weight	1,46 kg

Services (optional)

Article number for factory calibration (tensile force)	961-165V
Article number for factory calibration (compressive force)	961-265V
Article number for factory calibration (tensile force/ compressive force)	961-365V

Category

Brand	Sauter
Product category	Measuring cell
Product group	Load/force measuring cell
Product family	CS P1

Measuring System

Weighing capacity [Max]	5000 kg
Load cell connection	4-wire
Load cell OIML class	C3
Load cell - Resolution (verifiable)	3000 e
Load cell - characteristic value - nominal	2 mV/V
Load cell - Y-value	10000
Load cell - Combined error	0,02%
Load cell - Dead load [Min] (%)	0%

Measuring applications
force
mass

Load cell - Input resistance - nominal
350 Ω

Load cell - Output resistance - nominal
351 Ω

Load cell - Isolation resistance - [Min]
500 MΩ

Measuring range force [Max] (N)
50 kN

Directions of force
tension
compression

Approval

CE mark ✓

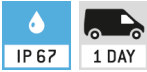
KERN CS 5000-3P1



4-wire "S" measuring cell made of nickel-plated steel for force and mass measurement

Pictograms

STANDARD



OPTION

