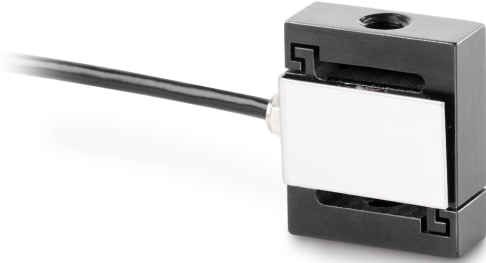


# KERN CS 20-Y1



Miniature "S"-load/force measuring cell made of stainless steel



## Construction

Design	"S" shaped cell
Material	stainless steel
Cable length	2 m
Mounting - force application	Threaded hole M4
Mounting - force dissipation	Threaded hole M4

## Functions

IP protection - complete device	IP65
---------------------------------	------

## Environmental conditions

Use temperature [Min]	-30 °C
Use temperature [Max]	70 °C

## Packing & Shipping

Readability force [d] (N)	1 d
Dimensions packaging (W×D×H)	150×105×40 mm
Net weight	0,03 kg
Shipping method	Parcel service
Net weight approx.	0,05 kg
Gross weight approx.	0,10 kg
Shipping weight	0,1 kg

## Services (optional)

Article number for DAkkS calibration (tensile force)	963-161V
Article number for DAkkS calibration (compressive force)	963-261V
Article number for DAkkS calibration (tensile force/ compressive force)	963-361V

## Pictograms

### STANDARD



### OPTION



## Category

Brand	Sauter
Product category	Measuring cell
Product group	Load/force measuring cell
Product family	CS Y1

## Measuring System

Weighing capacity [Max]	20 kg
Load cell connection	4-wire
Load cell - characteristic value - nominal	2 mV/V
Load cell - Combined error	0,05%
Measuring applications	force mass
Load cell - Input resistance - nominal	385 Ω
Load cell - Output resistance - nominal	350 Ω
Load cell - Isolation resistance - [Min]	2000 MΩ
Load cell - Recommended excitation voltage [Min]	5 V
Load cell - Recommended excitation voltage [Max]	10 V
Load cell - Input resistance - variance	3 Ω
Load cell - Output resistance - variance	3 Ω
Measuring range force [Max] (N)	200 N
Directions of force	tension compression

## Approval

CE mark	✓
---------	---