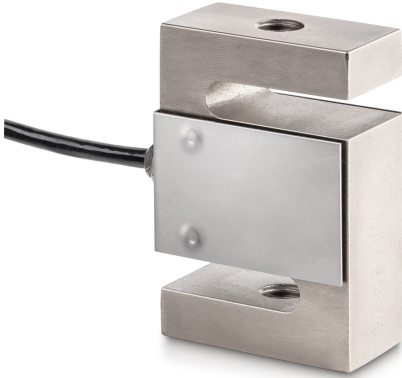


KERN CS 10000-3P1

KERN

4-wire "S" measuring cell made of nickel-plated steel for force and mass measurement



Construction

Design	"S" shaped cell
Dimension (W×D×H)	125×175×50 mm
Material	steel, nickel-plated
Cable length	6 m
Mounting - force application	Threaded hole M33 × 3
Mounting - force dissipation	Threaded hole M33 × 3

Functions

IP protection - complete device	IP67
---------------------------------	------

Environmental conditions

Use temperature [Min]	-10 °C
Use temperature [Max]	40 °C
Ambient temperature [Min]	-35 °C
Ambient temperature [Max]	65 °C
Storage temperature [Min]	-40 °C
Storage temperature [Max]	70 °C

Packing & Shipping

Readability force [d] (N)	1 d
Dimensions packaging (W×D×H)	320×320×160 mm
Net weight	6,72 kg
Shipping method	Parcel service
Net weight approx.	7 kg
Gross weight approx.	9 kg
Shipping weight	8,52 kg

Services (optional)

Article number for factory calibration (tensile force)	961-166V
Article number for factory calibration (compressive force)	961-266V
Article number for factory calibration (tensile force/ compressive force)	961-366V

Category

Brand	Sauter
Product category	Measuring cell
Product group	Load/force measuring cell
Product family	CS P1

Measuring System

Weighing capacity [Max]	10000 kg
Load cell connection	4-wire
Load cell OIML class	C3
Load cell - Resolution (verifiable)	3000 e
Load cell - characteristic value - nominal	2 mV/V
Load cell - Y-value	10000
Load cell - Combined error	0,02%
Load cell - Dead load [Min] (%)	0%
Measuring applications	force mass
Load cell - Input resistance - nominal	350 Ω
Load cell - Output resistance - nominal	351 Ω
Load cell - Isolation resistance - [Min]	500 MΩ
Measuring range force [Max] (N)	100 kN
Directions of force	tension compression

Approval

CE mark	✓
---------	---

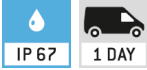
KERN CS 10000-3P1



4-wire "S" measuring cell made of nickel-plated steel for force and mass measurement

Pictograms

STANDARD



OPTION

