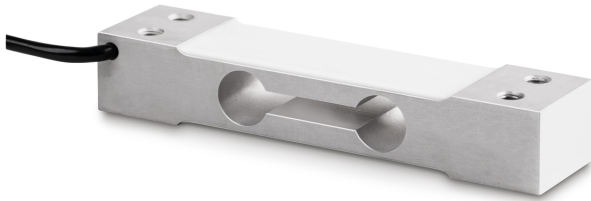


KERN CP 35-3P1

KERN

Single-point load cell made of anodised aluminium



Category

Brand	Sauter
Product category	Measuring cell
Product group	Load cell
Product family	CP P1

Measuring System

Weighing capacity [Max]	35 kg
Load cell connection	4-wire
Load cell OIML class	C3
Load cell - Resolution (verifiable)	3000 e
Temperature coefficient - zero signal	$\leq \pm 0.02\%FS/10\text{ }^{\circ}C$
Creep error (30 minutes)	$\leq \pm 0.0167\%FS$
Safe overload	150%FS
Ultimate overload	300%FS
Zero balance	$\leq \pm 2.0\%FS$
Maximum platform size	250×350 mm
Temperature coefficient - characteristic value	$\leq \pm 0.0175\%FS/10\text{ }^{\circ}C$
Load cell - characteristic value - nominal	2 mV/V
Load cell - characteristic value - variance	0,2 mV/V
Load cell - Y-value	10000
Load cell - Combined error	0,023%
Load cell - Dead load [Min] (%)	0%
Measuring applications	mass
Load cell - Input resistance - nominal	409 Ω
Load cell - Output resistance - nominal	350 Ω
Load cell - Isolation resistance - [Min]	5000 M Ω
Load cell - Recommended excitation voltage [Min]	5 V

Load cell - Recommended excitation voltage [Max] 12 V

Load cell - Input resistance - variance 6 Ω

Load cell - Output resistance - variance 3 Ω

Directions of force compression

Approval

CE mark	✓
Pattern approval for conformity assessment	✓

Construction

Design	Singlepoint load cell
Dimension (W×D×H)	130×30×22 mm
Material	aluminium
Cable length	0,4 m
Mounting - force application	2 × threaded hole M6
Mounting - force dissipation	2 × threaded hole M6

Functions

IP protection - complete device IP65

Environmental conditions

Use temperature [Min]	-10 $^{\circ}C$
Use temperature [Max]	40 $^{\circ}C$
Ambient temperature [Min]	-35 $^{\circ}C$
Ambient temperature [Max]	65 $^{\circ}C$
Storage temperature [Min]	-40 $^{\circ}C$
Storage temperature [Max]	70 $^{\circ}C$

Packing & Shipping

Readability force [d] (N)	1 d
Dimensions packaging (W×D×H)	165×100×45 mm
Net weight	0,185 kg
Shipping method	Parcel service
Net weight approx.	0,20 kg
Gross weight approx.	0,25 kg
Shipping weight	0,228 kg

Services (optional)

Article number for DAkkS calibration (compressive force) 963-261V

KERN CP 35-3P1

Single-point load cell made of anodised aluminium



Pictograms

STANDARD



OPTION

