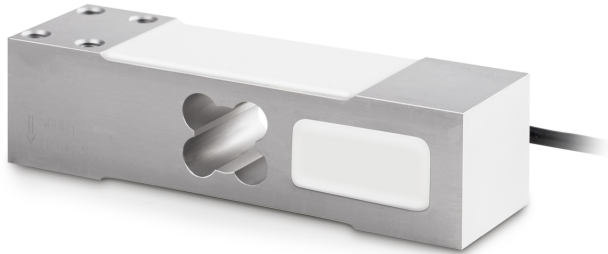


# KERN CP 100-3P2

Single-point load cell made of aluminium

# KERN



## Approval

CE mark ✓

## Construction

Design	Singlepoint load cell
Dimension (W×D×H)	150×35×40 mm
Material	aluminium
Cable length	2 m
Mounting - force application	4 × threaded hole M6
Mounting - force dissipation	4 × threaded hole M6

## Functions

IP protection - complete device IP65

## Environmental conditions

Use temperature [Min]	-10 °C
Use temperature [Max]	40 °C
Ambient temperature [Min]	-35 °C
Ambient temperature [Max]	65 °C
Storage temperature [Min]	-40 °C
Storage temperature [Max]	70 °C

## Packing & Shipping

Readability force [d] (N)	1 d
Dimensions packaging (W×D×H)	160×105×110 mm
Net weight	0,555 kg
Shipping method	Parcel service
Net weight approx.	0,60 kg
Gross weight approx.	0,65 kg
Shipping weight	0,609 kg

## Services (optional)

Article number for DAkkS calibration (compressive force) 963-262V

## Pictograms

### STANDARD



### OPTION



## Category

Brand	Sauter
Product category	Measuring cell
Product group	Load cell
Product family	CP P2

## Measuring System

Weighing capacity [Max]	100 kg
Load cell connection	4-wire
Load cell OIML class	C3
Load cell - Resolution (verifiable)	3000 e
Maximum platform size	400×400 mm
Load cell - characteristic value - nominal	2 mV/V
Load cell - characteristic value - variance	0,2 mV/V
Load cell - Y-value	10000
Load cell - Combined error	0,023%
Load cell - Dead load [Min] (%)	0%
Measuring applications	mass
Load cell - Input resistance - nominal	406 Ω
Load cell - Output resistance - nominal	350 Ω
Load cell - Isolation resistance - [Min]	5000 MΩ
Load cell - Recommended excitation voltage [Min]	5 V
Load cell - Recommended excitation voltage [Max]	12 V
Load cell - Input resistance - variance	6 Ω
Load cell - Output resistance - variance	3 Ω
Directions of force	compression