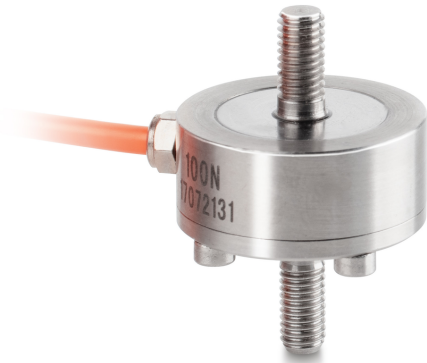


KERN CO 10-Y2

Miniature cylindrical load cell made from stainless steel

KERN



Category

Brand	Sauter
Product category	Measuring cell
Product group	Load/force measuring cell
Product family	CO Y2

Measuring System

Weighing capacity [Max]	10 kg
Load cell connection	4-wire
Load cell OIML class	G5
Load cell - characteristic value - nominal	1 mV/V
Load cell - Combined error	0,5%
Measuring applications	force mass
Load cell - Input resistance - nominal	350 Ω
Load cell - Output resistance - nominal	350 Ω
Load cell - Isolation resistance - [Min]	5000 M Ω
Load cell - Recommended excitation voltage [Min]	9 V
Load cell - Recommended excitation voltage [Max]	12 V
Load cell - Input resistance - variance	20 Ω
Load cell - Output resistance - variance	3 Ω
Measuring range force [Max] (N)	100 N
Directions of force	tension compression

Approval

CE mark	✓
---------	---

Construction

Design	Tension-/compression rod
Material	stainless steel
Cable length	2 m
Dimension (\varnothing ×H)	26×37,5 mm
Mounting - force application	External thread M5
Mounting - force dissipation	External thread M5

Functions

IP protection - complete device	IP65
---------------------------------	------

Environmental conditions

Use temperature [Min]	0 °C
Use temperature [Max]	40 °C

Packing & Shipping

Readability force [d] (N)	1 d
Dimensions packaging (W×D×H)	120×90×85 mm
Net weight	0,072 kg
Shipping method	Parcel service
Net weight approx.	0,10 kg
Gross weight approx.	0,15 kg
Shipping weight	0,2 kg

Services (optional)

Article number for DAkkS calibration (tensile force)	963-161V
Article number for DAkkS calibration (compressive force)	963-261V
Article number for DAkkS calibration (tensile force/ compressive force)	963-361V

KERN CO 10-Y2

Miniature cylindrical load cell made from stainless steel



Pictograms

STANDARD



OPTION

