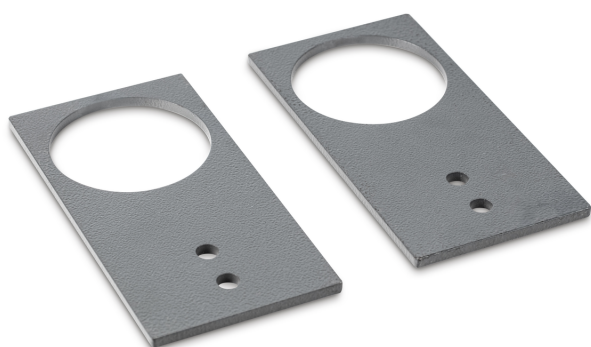


KERN BFS-A06N



Pair of base plates to fix the weighing bridge to the floor



Category

Brand	KERN
Product category	Balance
Product group	Base plate

Construction

Material	steel, lacquered
Material weighing plate	steel, lacquered
Material platform	steel, varnished
Material load cell(s)	steel

Functions

PLU - total	100
-------------	-----

Packing & Shipping

Readability force [d] (N)	1 d
Dimensions packaging (W×D×H)	205×105×20 mm
Net weight	0,74 kg
Shipping method	Parcel service
Net weight approx.	0,75 kg
Gross weight approx.	0,80 kg
Shipping weight	0,78 kg

Pictograms

STANDARD

