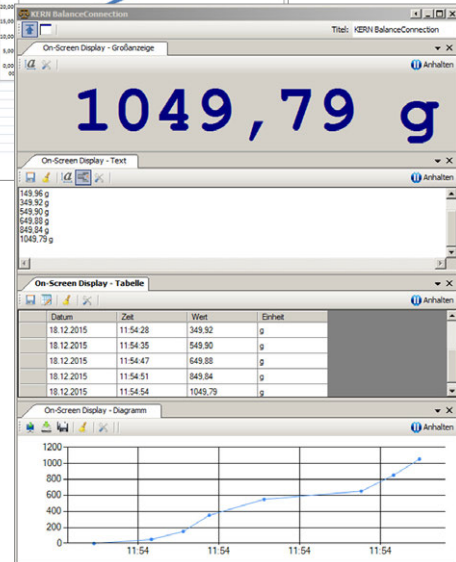
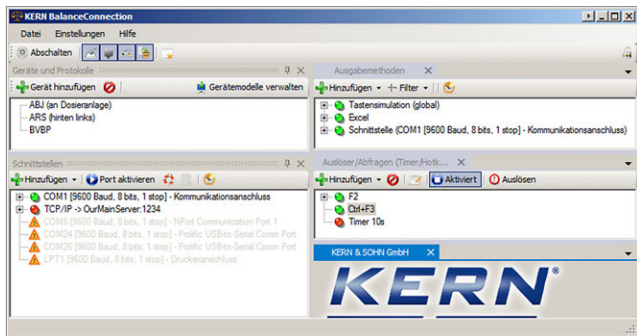
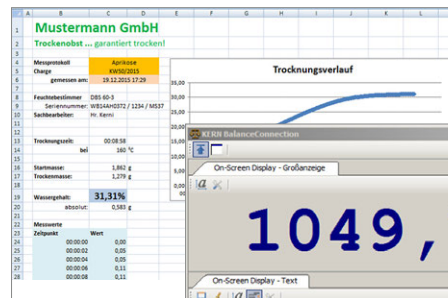
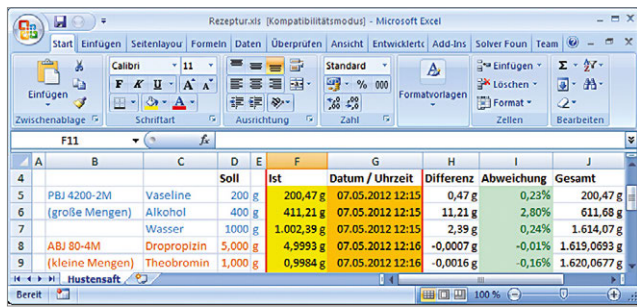


BalanceConnection Pro KERN SCD-4.0-PRO

KERN Software BalanceConnection SCD-4.0 Pro



Professional and highly flexible recording or transmission of measured values, in particular also to Microsoft® Excel or Access

Features

- For operating systems Windows XP, Vista, 7, 8, 8.1, 10
- Supports balances measuring devices with RS 232, RS 485, Bluetooth, LAN or WiFi network (TCP/UDP/IP)
- Highly flexible formatting of the output (any order, formatting and rounding), particularly recording of date and time for every value transferred, if required
- Any number of devices/interfaces can be connected, as well as simultaneous and synchronised recording of several balances
- Key-activated or time-controlled interrogation of measurements or trigger of device functions, also for continuous recording
- The interface protocols for KERN balances are already predefined (standard configuration)
- Compatible interface cable included when you order a KERN balance at the same time
- Many different transfer and recording options:
  - Microsoft® Excel/Access/Word in the foreground or background
  - Other Windows applications (through key simulation), e.g. shipping software or ERP system (SAP, Sage, etc.)
  - File recording (e.g. as text or CSV file)
  - Print out on text or label printer
  - Screen output such as large display, line chart (drying curve for moisture analyzer), histogram, etc.

Additional features of the BalanceConnection PRO version:

- ODBC/SQL databases such as SQL Server or MySQL
- Transfer to HTTP Webservices/Web forms
- Histogram
- Enables the connection of medical balances to practice EDP systems using the device data transfer protocol (GDT) and also the HL7 protocol
- Implementation of programs/scripts using freely-definable command lines
- Command sequences
- Defining the conditions for specific events and the reaction to these events
- Filter for stability recognition (configurable value storage)
- Central configuration repository, e.g. on the network
- On-screen displays with configurable user interface for flexible balance operation

Benefits

- Ideal software where weighing data which has been collected needs to be transferred to a Windows PC
- Particularly suitable for professional integration of weighing systems into existing networks where there is a high demand for automated data transfer and further processing, for integration of databases
- Automatic recording, e.g. for long-term tests
- GLP-compliant lab software
- Can be used across different branches and applications
- Also available as a cost-optimised package with 5 licenses, **you save more than 30 %!**
- Also available immediately as a download license
- Scope of supplies: 1 CD, 1 License KERN SCD-4.0-PRO
- Scope of supplies: 1 CD, 5 Licenses KERN SCD-4.0-PROS05
- Scope of supplies: Download link for 1 License, KERN SCD-4.0-PRO-DL